

Butterfly valve types 56 / 57 / 75 with electric actuator



Body material	PVC-U	PP	PP / PVDF ¹⁾
Sealing material (optionally)	• EPDM	• CSM	• FKM • FKM-F
Working temperature ³⁾	0 °C up to 50 °C ²⁾	-20 °C up to 80 °C ²⁾	-20 °C up to 120 °C ²⁾
Nominal size	• Type 56: DN 400 ⁴⁾	• Type 57: DN 40 up to DN 350	• Type 75: DN 450 up to DN 600 (in PDCPD up to DN 1500)
Connection with pipe	Sandwich valve with connection dimensions acc. to DIN EN 1092-1 - PN 10 ⁵⁾		
Length	Company standard		
Actuator	Electric actuator, 230 V, 50 Hz / 400 V, 50 Hz, IP 67 2 potential free limit switches, Manual override, heated gear box, visual position indicator		

¹⁾ Body (not medium contacted) PP, disc PVDF

³⁾ Designed for 10 years of use with a neutral medium (water)

⁴⁾ PVC-U up to DN 350

⁵⁾ also acc. to ANSI or JIS available

²⁾ Working temperatures for sealing materials:

EPDM: -20 up to 90 °C

CSM: -20 up to 80 °C

FKM / FKM-F: -5 up to 120 °C

Example for an invitation to tender text:

Butterfly valve type 57, DN 100, PN 10, PP / EPDM, sandwich valve with connection acc. to DIN EN 1092-1 - PN 10 with electric actuator type OA 6, 230 V / 50 Hz, IP 67, manual override, 2 potential free limit switches, heated gear box, visual position indicator

Document: FRANK_DB_L2_Absperrklappe Typen 56 + 57 + 75 elektr._01-2024_EN

Butterfly valve types 56 / 57 / 75 with electric actuator

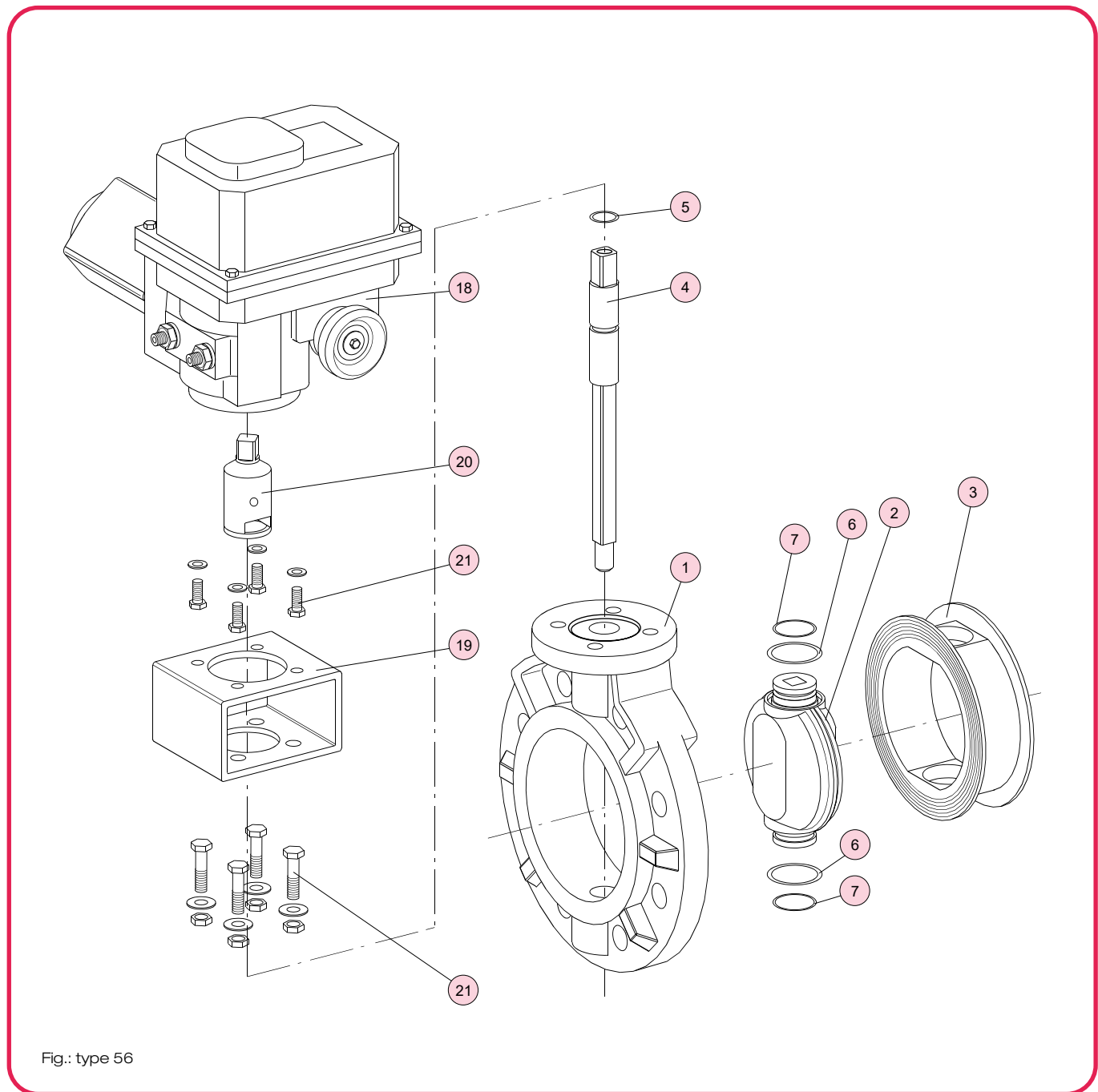


Fig.: type 56

No.	Description	Number	Material
1	Body ¹⁾	1	PVC-U, PP, PP (Scheibe-PVDF)
2	Disc ^{*)}	1	PVC-U, PP, PVDF
3	Seat ^{*)}	1	EPDM, CSM, FKM, FKM-F
4	Stem	1	1.4000 (SUS 403)
5	O-ring ^{*)}	1	EPDM, CSM, FKM, FKM-F
6	O-ring ^{*)}	2	EPDM, CSM, FKM, FKM-F

^{*)} Wearing parts

¹⁾ PP: DN 400 - DN 600 with reinforcing rings

No.	Description	Number	Material
7	O-ring ^{*)}	2	EPDM, CSM, FKM, FKM-F
18	Electric actuator	1	Aluminium alloy, epoxylackiert
19	Bracket / ISO	1	A2 - 1.4301 (SUS 304)
20	Coupling	1	A2 - 1.4305 (SUS 303)
21	Screw, washer / nut	8/8/4	A2 - 1.4301 (SUS 304)

Butterfly valve type 57 with electric actuator 230 V (400 V) / 50 Hz

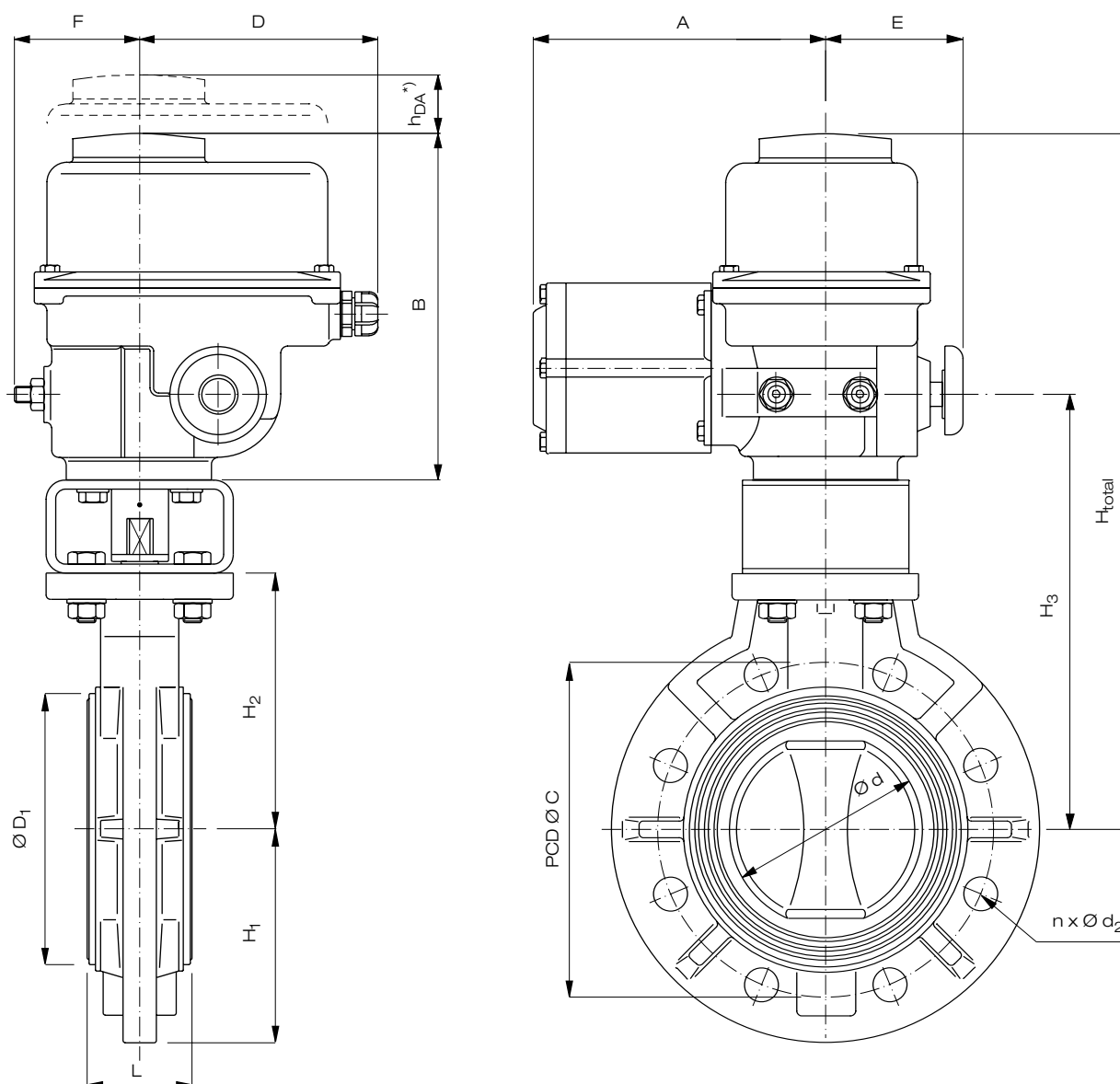


Fig.: type 56

*) necessary space for disassembling the cap of the actuator

Dimensions in mm																	Actuator		Weight in kg / pc.		
DN	d	C	D ₁	L	H ₁	H ₂	H ₃	H _{total}	h _{DA}	A	B	D	E	F	n x d ₁	Type	t _s [sec]	PVC-U	PP	PVDF	
40	45	110	71	39	75	95	208	380	95	157	225	127	116	73	4 x 18	OA3	5	8,1	8,0	8,3	
50	56	125	81	42	83	105	218	390	95	157	225	127	116	73	4 x 18	OA3	5	8,3	8,1	8,6	
65	69	145	95	46	93	115	228	400	95	157	225	127	116	73	4 x 18	OA3	5	8,7	8,2	9,1	
80	77	160	105	46	106	130	243	415	95	157	225	127	116	73	8 x 18	OA3	5	8,9	8,5	9,5	

Actuation features and wiring diagram see s. L11-3-5

Butterfly valve type 57 with electric actuator 230 V (400 V) / 50 Hz

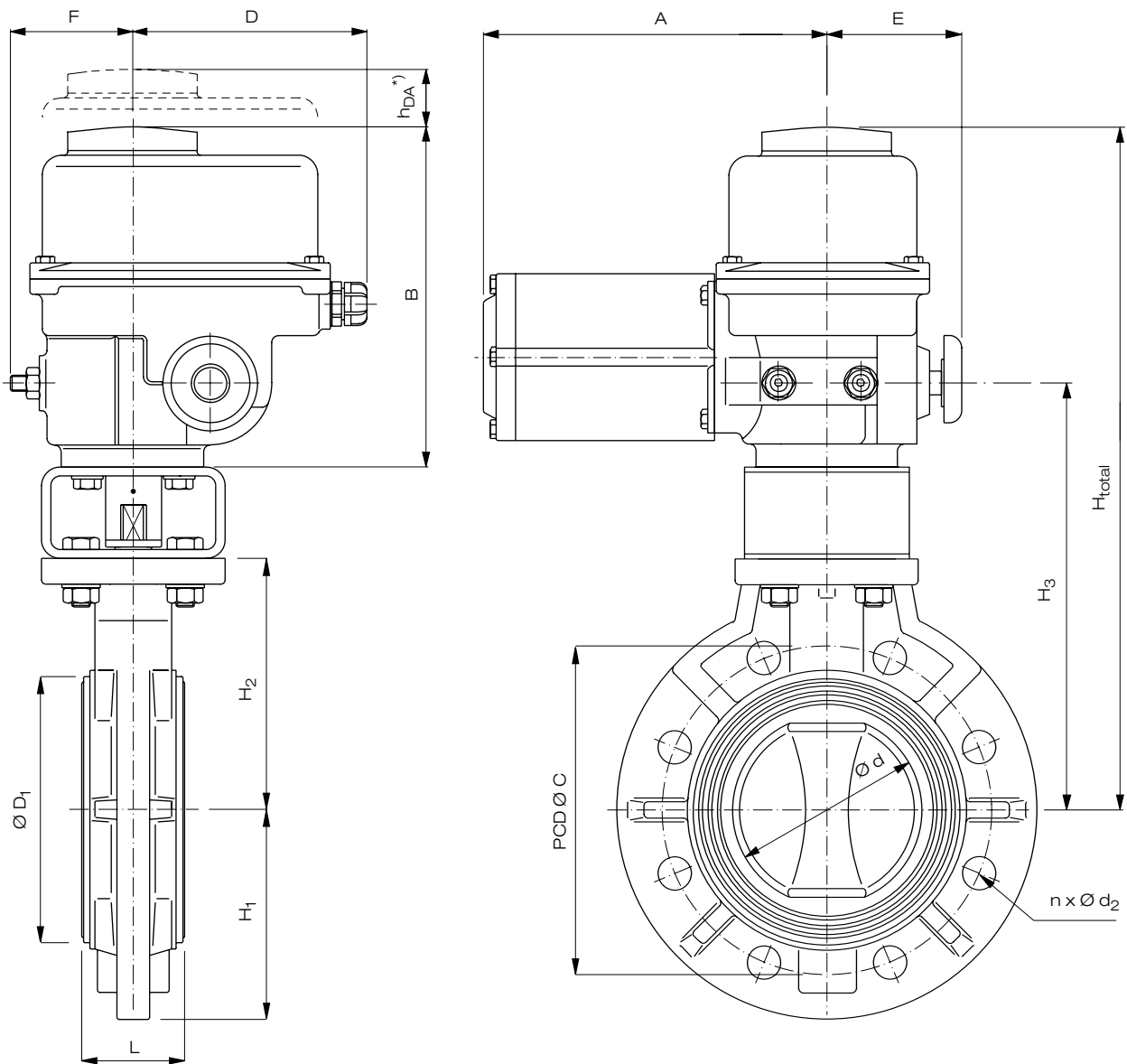


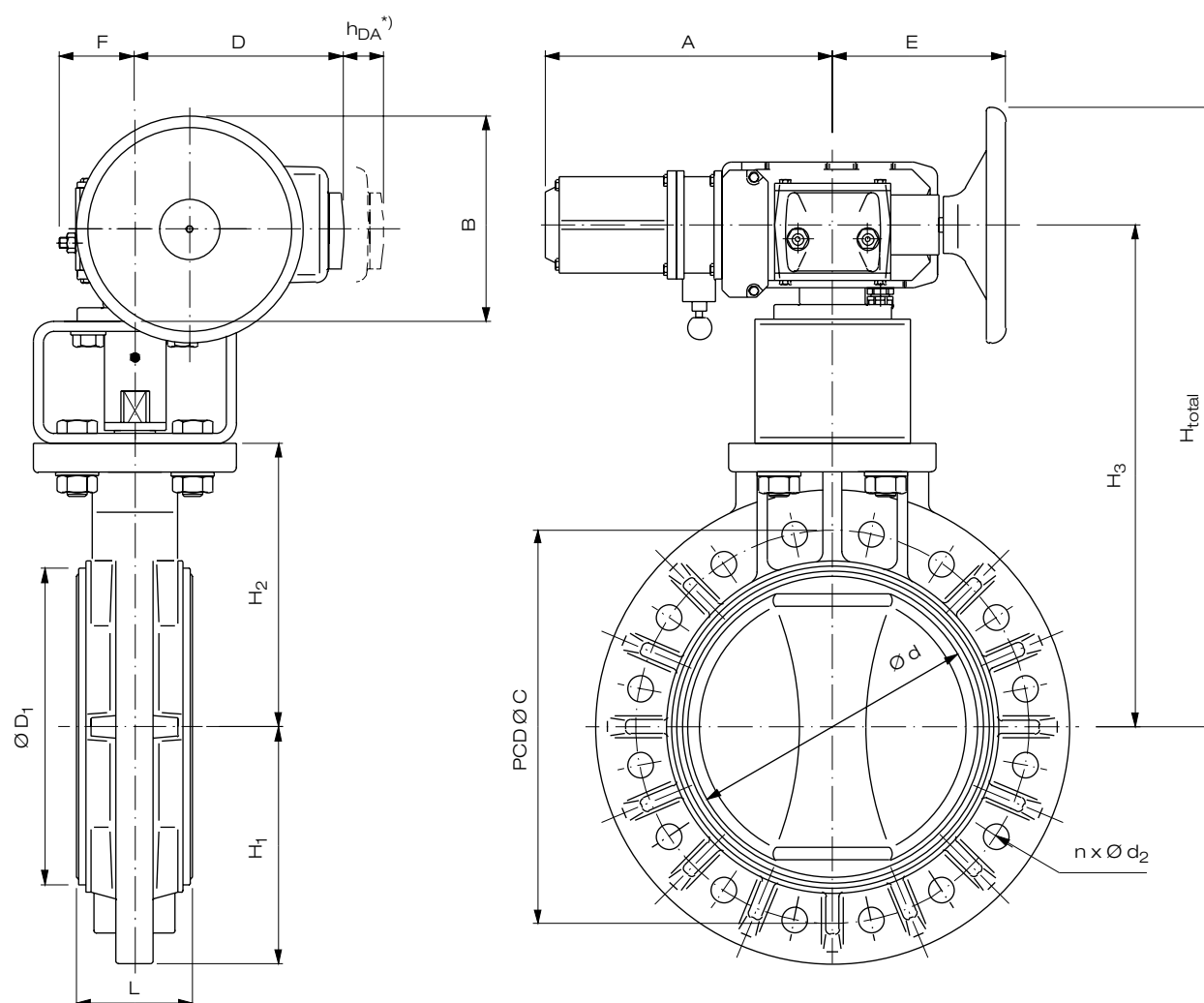
Fig.: type 56

* necessary space for disassembling the cap of the actuator

Dimensions in mm																Actuator		Weight in kg / pc.		
DN	d	C	D ₁	L	H ₁	H ₂	H ₃	H _{total}	h _{DA} *	A	B	D	E	F	n x d ₁	Type	t _s [sec]	PVC-U	PP	PVDF
100	102	180	134	56	119	145	258	430	95	203	225	127	116	73	8 x 18	OA6	6	9,2	8,9	9,9
125	129	210	169	66	132	160	293	465	95	203	225	127	116	73	8 x 18	OA6	6	11,2	10,8	12,6
150	150	240	190	71	143	175	308	480	95	203	225	127	116	73	8 x 22	OA8	6	14,5	14,0	15,9

Actuation features and wiring diagram see s. L11-3-5

Butterfly valve types 56 / 57 / 75 with electric actuator 230 V (400 V) / 50 Hz



^{*)} necessary space for disassembling the cap of the actuator

Dimensions in mm																Actuator		Weight in kg / pc.		
DN	d	C	D ₁	L	H ₁	H ₂	H ₃	H _{total}	h _{DA}	A	B	D	E	F	n x d ₁	Type	t _s [sec]	PVC-U	PP	PVDF
200	195	295	242	87	170	206	386	466	100	312	180	229	167	84	8 x 22	AS25	30	29,8	28,1	33,8
250	250	350	302	112	211	241	421	547	100	360	226	229	168	84	12 x 22	AS50	30	35,0	33,9	39,6
300	303	400	360	129	244	298	478	604	100	360	226	229	168	84	12 x 22	AS50	30	42,4	40,6	51,4
350	351	460	393	129	270	325	536	662	100	360	257	229	168	84	16 x 22	AS80	30	50,6	49,1	58,4
400	406	515	470	169	300	350	580	657	100	360	207	229	168	84	16 x 26	AS80	30	-	61,6	73,7
450	452	565	525	179	315	370	620	697	100	360	207	229	168	84	20 x 26	AS80	30	-	65,4	80,4
500	502	620	575	190	350	400	606	687	90	392	214	187	172	229	20 x 26	BS100	30	-	82,0	96,4
600	603	725	686	209	424	465	671	752	90	392	214	187	172	229	20 x 30	BS100	30	-	118,5	140,5

Actuation features and wiring diagram see s. L11-3-5