

## Butterfly valve type 57 L with pneumatic actuator 4 to 5 bar air pressure



Body material	PDCPD	
Disc material	PP	PVDF
Sealing material (optionally)	• EPDM	• FKM • FKM-F
Working temperature <sup>1)</sup>	-20 °C up to 90 °C <sup>2)</sup>	-20 °C up to 100 °C <sup>2)</sup>
Nominal size	DN 80 up to DN 250	
Connection with pipe	Sandwich valve with connection dimensions acc. to DIN EN 1092-1 - PN 10 <sup>3)</sup>	
Length	Company standard	
Actuator	Pneumatic, single acting or double acting	
Accessories	Limit switches, solenoid valves, position control units	

<sup>1)</sup> Designed for 10 years of use with a neutral medium (water)

<sup>3)</sup> also acc. to ANSI or JIS available

<sup>2)</sup> Working temperatures for sealing materials:

EPDM: -20 up to 90 °C

CSM: -20 up to 80 °C

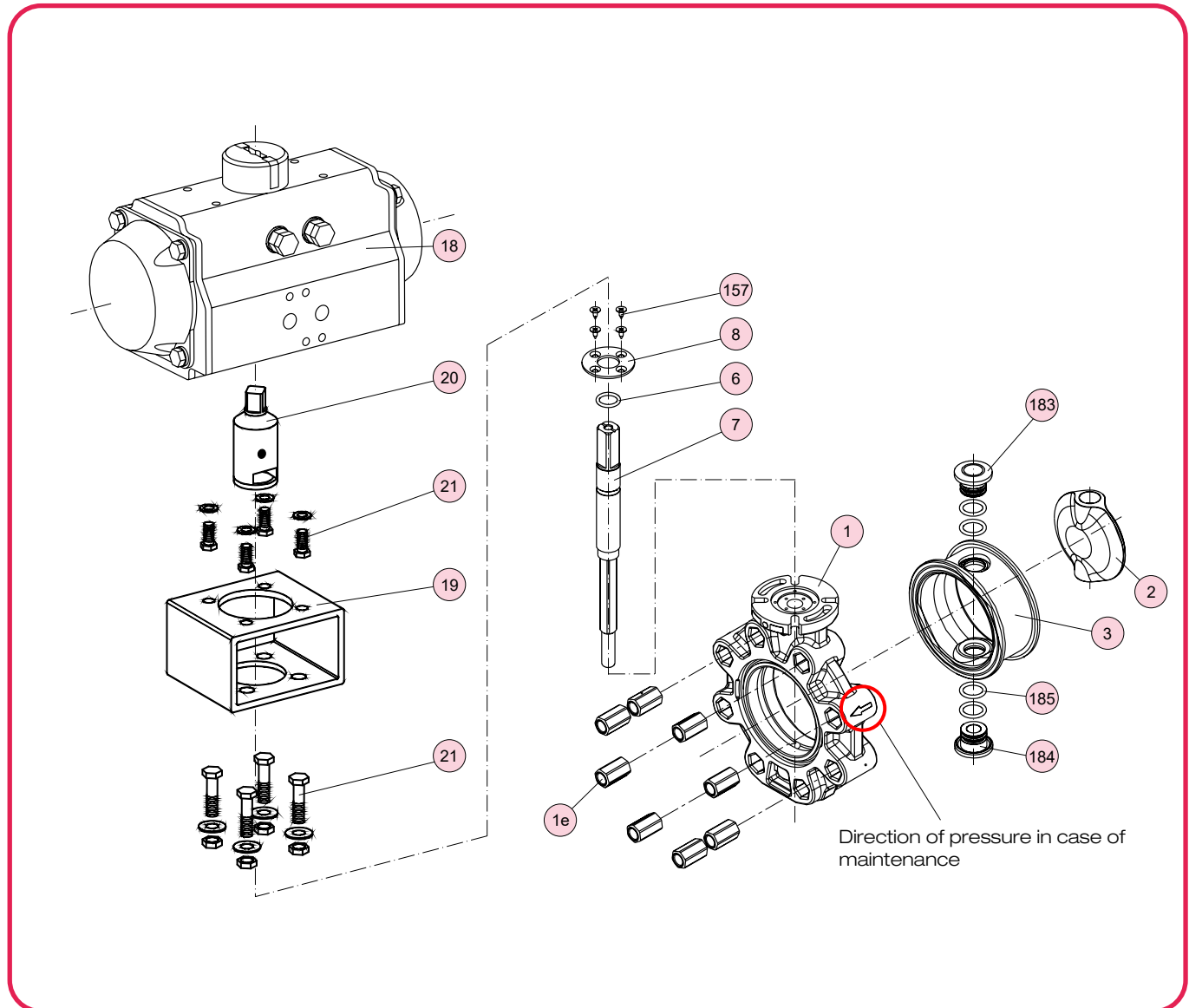
FKM / FKM-F: -5 up to 120 °C

### Example for an invitation to tender text:

Butterfly valve type 57 L, DN 200, PN 10, PDCPD / PP / EPDM, sandwich valve with connection acc. to DIN EN 1092-1 - PN 10 with pneumatic actuator type SC 900/4, single acting, air to open, 4 to 5 bar air pressure, optical position indicator, directional pressurization in case of maintenance

**Document:** FRANK\_DB\_L2\_Absperrklappe Typ 57a L pneum. 4-5bar\_01-2024\_EN

## Butterfly valve type 57 L with pneumatic actuator 4 to 5 bar air pressure



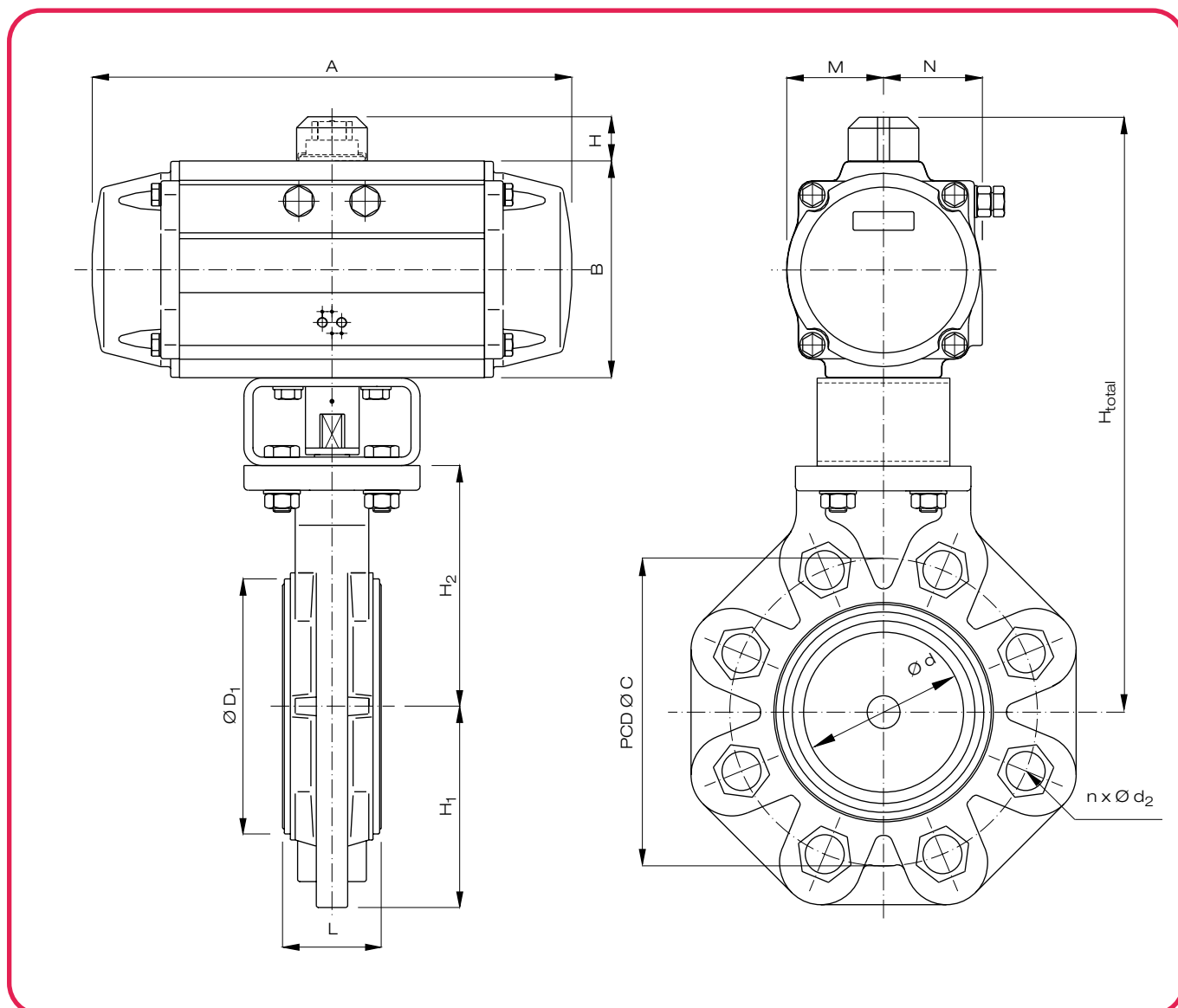
No.	Description	Number	Material
1	Body	1	PDCPD
1e	Langmutter	8 <sup>1)</sup>	A2 - 1.4301 (SUS 304)
2	Disc <sup>*)</sup>	1	PP, PVDF
3	Seat <sup>*)</sup>	1	EPDM, FKM, FKM-F
6	O-ring (C) <sup>*)</sup>	1	EPDM, FKM, FKM-F
7	Stem	1	1.4000 (SUS 403)
8	Stem retainer	1	PP
18	Pneumatic actuator	1	extruded aluminium alloy, coated

<sup>\*)</sup> Wearing parts

1) at DN 250: 12 pc

No.	Description	Number	Material
19	Bracket / ISO	1	A2 - 1.4301 (SUS 304)
20	Coupling	1	A2 - 1.4305 (SUS 303)
21	Screw, washer, nut	4/8/4	A2 - 1.4301 (SUS 304)
157	Screw	4	A2 - 1.4301 (SUS 304)
183	Seat bush (A) above <sup>*)</sup>	1	PVC-U, PP, PVDF
184	Seat bush (B) below <sup>*)</sup>	1	PVC-U, PP, PVDF
185	O-ring <sup>*)</sup>	4	EPDM, FKM, FKM-F

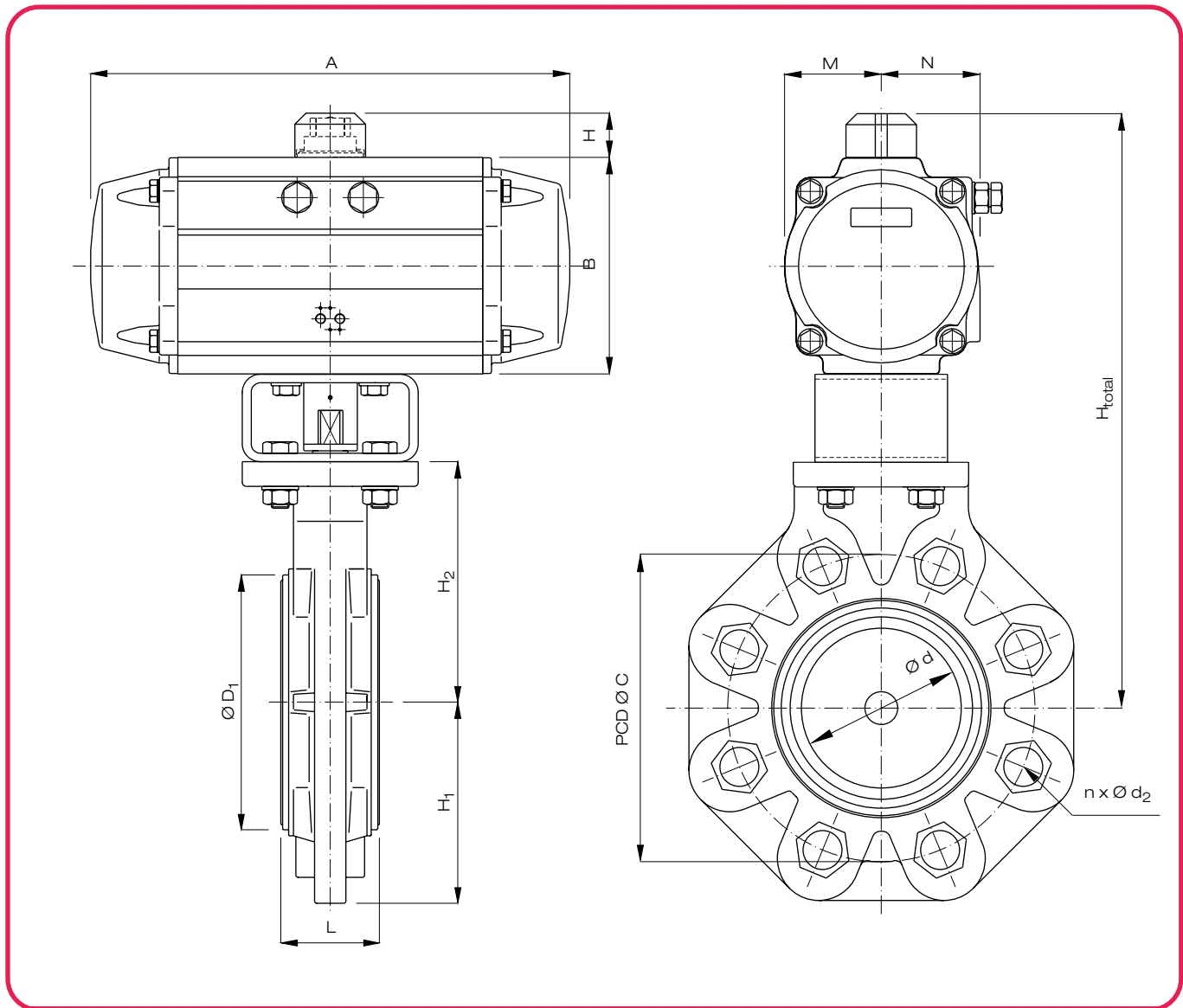
## Butterfly valve type 57 L with pneumatic actuator, single acting, air to open, 4 to 5 bar air pressure



Dimensions in mm														Actuator			Weight in kg / pc.	
DN	d	C	H <sub>1</sub>	D <sub>1</sub>	L	H <sub>2</sub>	B	H	H <sub>total</sub>	A	M	N	n x d <sub>2</sub>	Type	LV <sup>*)</sup> [l/lift]	t <sub>s</sub> [sec]	PP	PVDF
80	77	160	94	105	46	130	115	20	325	241	49,5	56,5	8 x M16	SC100/4	2,55	0,6	9,0	9,6
100	102	180	105	134	56	145	145	30	370	304	64	72	8 x M16	SC220/4	3,55	1,1	14,2	14,4
125	129	210	124	169	66	160	157	30	427	333	69,5	77	8 x M16	SC300/4	5,95	1,4	20,2	21,0
150	150	240	138	190	71	175	177	30	462	394,5	80	86	8 x M20	SC450/4	12,05	1,8	26,7	25,5
200	195	295	173	242	87	206	221	50	557	474	99	101	8 x M20	SC900/4	21,30	2,8	45,7	48,7
250	250	350	208	302	112	241	299	50	690	605	131	131	12 x M20	SC2000/4	50,00	4,6	89,5	87,5

<sup>\*)</sup> Air consumption with turning range 90° in litre/lift at 4 bar air pressure

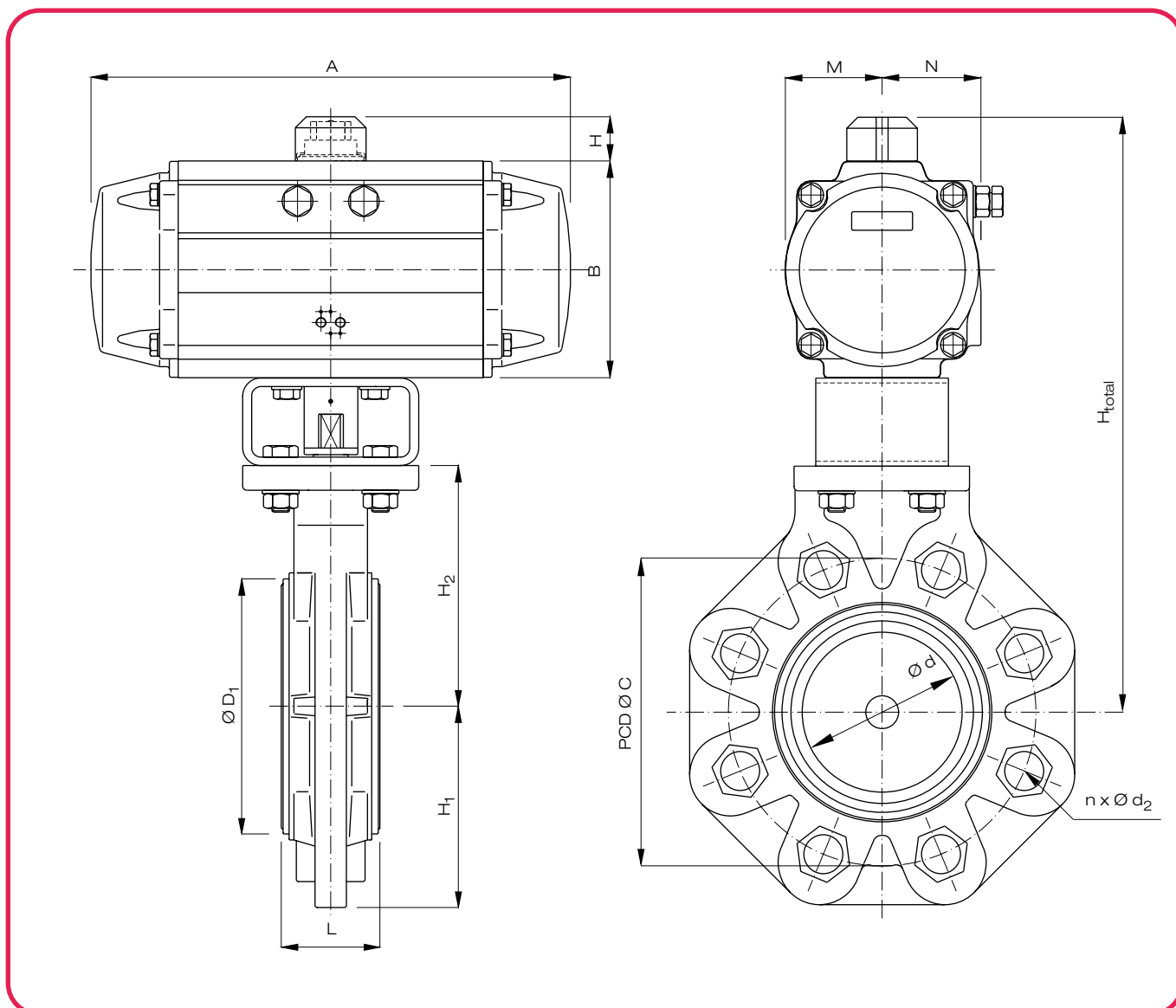
## Butterfly valve type 57 L with pneumatic actuator, single acting air to shut, 4 to 5 bar air pressure



Dimensions in mm													Actuator			Weight in kg / pc.		
DN	d	C	H <sub>1</sub>	D <sub>1</sub>	L	H <sub>2</sub>	B	H	H <sub>total</sub>	A	M	N	n x d <sub>2</sub>	Type	LV <sup>*)</sup> [l/lift]	t <sub>s</sub> [sec]	PP	PVDF
80	77	160	94	105	46	130	115	20	325	241	49,5	56,5	8 x M16	SO100/4	2,55	0,6	9,0	9,6
100	102	180	105	134	56	145	145	30	370	304	64	72	8 x M16	SO220/4	5,95	1,1	14,2	14,4
125	129	210	124	169	66	160	157	30	427	333	69,5	77	8 x M16	SO300/4	7,70	1,4	20,2	21,0
150	150	240	138	190	71	175	177	30	462	394,5	80	86	8 x M20	SO450/4	12,05	1,8	26,7	25,5
200	195	295	173	242	87	206	221	50	557	474	99	101	8 x M20	SO900/4	21,30	2,8	45,7	48,7
250	250	350	208	302	112	241	299	50	690	605	131	131	12 x M20	SO2000/4	50,00	4,6	89,5	87,5

<sup>\*)</sup> Air consumption with turning range 90° in litre/lift at 4 bar air pressure

## Butterfly valve type 57 L with pneumatic actuator, double acting, 4 to 5 bar air pressure



Dimensions in mm														Actuator			Weight in kg / pc.	
DN	d	C	H <sub>1</sub>	D <sub>1</sub>	L	H <sub>2</sub>	B	H	H <sub>total</sub>	A	M	N	n x d <sub>2</sub>	Type	LV <sup>*)</sup> [l/lift]	t <sub>s</sub> [sec]	PP	PVDF
80	77	160	94	105	46	130	102	20	312	203,5	42,5	50,5	8 x M16	DR60	4,00	0,35	6,1	6,7
100	102	180	105	134	56	145	115	20	340	241	49,5	56,5	8 x M16	DR100	6,45	0,5	7,7	7,9
125	129	210	124	169	66	160	127	20	387	259	55,5	63	8 x M16	DR150	9,10	0,6	13,0	13,6
150	150	240	138	190	71	175	145	30	420	304	64	72	8 x M20	DR220	14,95	0,8	17,7	17,5
200	195	295	173	242	87	206	177	30	493	394,5	80	86	8 x M20	DR450	30,95	1,4	30,5	33,5
250	250	350	208	302	112	241	221	50	592	474	99	101	12 x M20	DR900	55,75	2,2	51,4	49,4

\*) Air consumption with turning range 90° in litre/lift at 4 bar air pressure