

3/2-way ball valve type 23 with electric actuator



Body material	PVC-U	PVC-C	PP	PVDF
Ball seat	PTFE			
Other seats	• EPDM	• FKM	• *)	• FKM-F
Working temperature	0 °C up to 50 °C ¹⁾	0 °C up to 90 °C ¹⁾	-20 °C up to 80 °C ¹⁾	-20 °C up to 100 °C ¹⁾
Nominal size	DN 15 up to DN 100			
Connection with pipe	<ul style="list-style-type: none"> • Cement socket or spigot • Flange connection acc. to DIN EN 1092-1 - PN 10 (16) 		<ul style="list-style-type: none"> • Welding socket or spigot • Threaded socket 	
Length	DIN EN 558 - 1 series FTF 1 (DIN 3202 - series F 1)			
Actuator	DN 15 - DN 100 24 - 240 V / IP 67 2 potential-free limit switches, manual override, visual position indicator, heater in switch compartment		DN 80 - DN 100 230 V / 50 Hz, 400 V / 50 Hz, IP 67 2 potential-free limit switches, 0/180°, manual override, visual position indicator, heater in switch compartment	

*) Special version: CSM, NBR, FKM-F, FEP / Parofluor on request

¹⁾ Working temperatures for sealing materials:

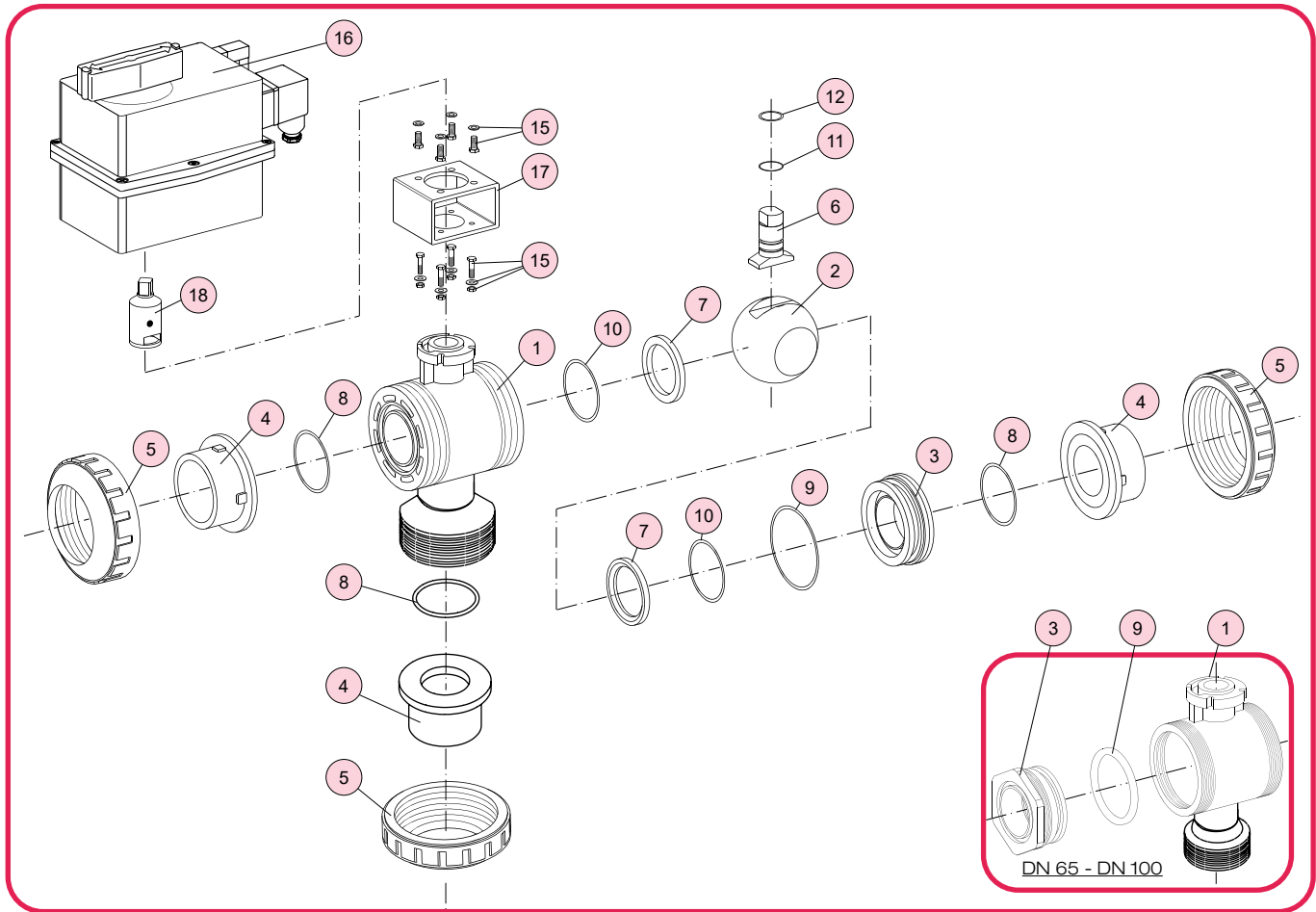
EPDM: -20 up to 90 °C
 FKM / FKM-F: -8 up to 100 °C

Example for an invitation to tender text:

3/2-way ball valve type 23, DN 100, PN 10, PP / FKM, welding socket PP, PN 10, true union, with electric actuator type OA 8, 230 V / 50 Hz, IP 67, manual override, visual position indicator, 2 potential-free limit switches 0/180°, heater in switch compartment

Document: FRANK_DB_L4_Kugelhahn 3-2-Wege Typ 23 elektr._01-2024_DE

3/2-way ball valve type 23 with electric actuator



No.	Description	Number	Material
1	Body	1	PVC-U, PVC-C, PP, PVDF
2	Ball ^{*)}	1	PVC-U, PVC-C, PP, PVDF
3	Carrier	2	PVC-U, PVC-C, PP, PVDF
4	End connector (socket, spigot, flange)	3	PVC-U, PVC-C, PE, PP, PVDF
5	Union nut	3	PVC-U, PVC-C, PP-G, PVDF
6	Stem ^{*)}	1	PVC-U, PVC-C, PP, PVDF
7	Ball seat ^{*)}	2	PTFE
8	O-ring (A) ^{*)}	3	EPDM, FKM ¹⁾

^{*)} Wearing parts

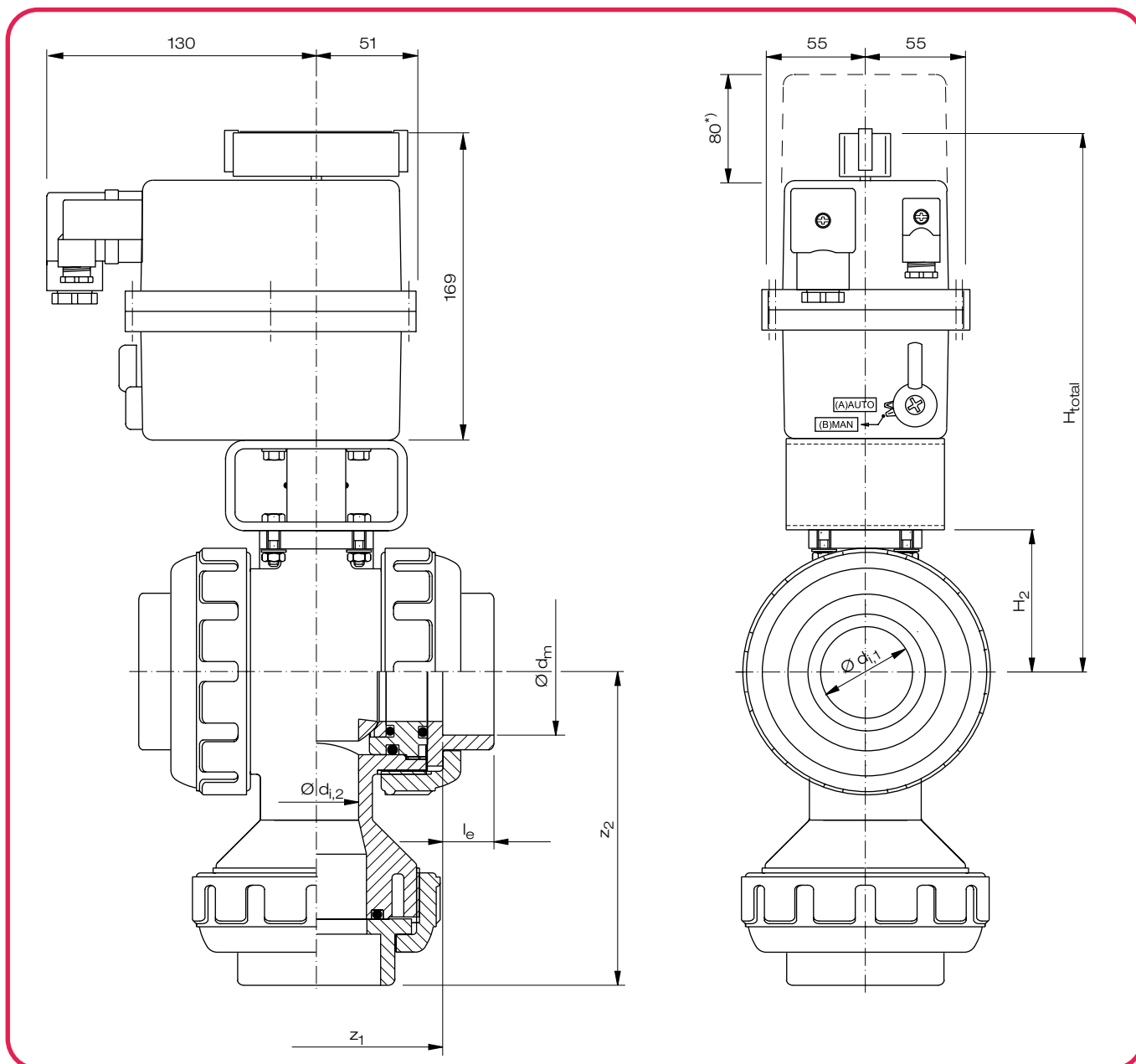
No.	Description	Number	Material
9	O-ring (B) ^{*)}	2	EPDM, FKM ¹⁾
10	O-ring (C) / gasket ^{*,2)}	2	EPDM, FKM ¹⁾
11	O-ring (D) ^{*)}	1	EPDM, FKM ¹⁾
12	O-ring (E) ^{*)}	1	EPDM, FKM ¹⁾
15	Screw, washer / nut	8/4	A2 - 1.4301 (SUS 304)
16	Electric actuator	1	Polyamide ³⁾
17	Bracket / ISO	1	A2 - 1.4301 (SUS 304)
18	Coupling	1	A2 - 1.4301 (SUS 304)

¹⁾ Special version: CSM, NBR, FKM-F, FEP / Parofluor on request

²⁾ Flat seat for DN 80 and above

³⁾ DN 80 and DN 100: actuator off aluminium alloy cast iron, epoxy coated

3/2-way ball valve type 23 with electric actuator, 24-240 V AC/DC



*) necessary space for disassembling the cap of the actuator

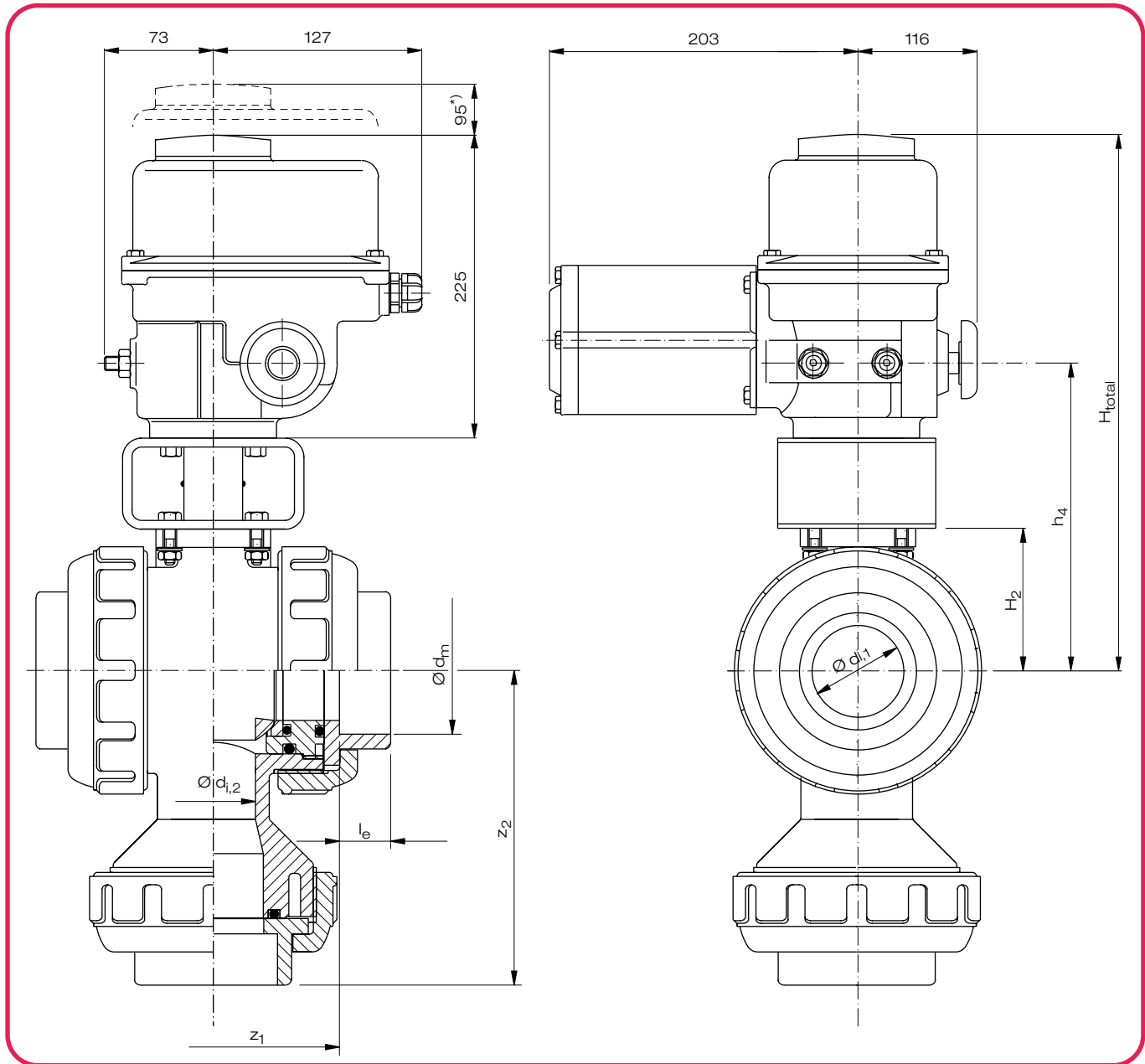
Dimensions in mm												Actuator		Weight in kg / pc.				
DN	d _{i,1}	d _{i,2}	Cement socket				Welding socket				H ₂	H _{total}	Type	t _s [sec]	Cement socket		Welding socket	
			d _m	z ₁	e	z ₂	d _m	z ₁	e	z ₂					PVC-U	PVC-C	PP	PVDF
15	15	15	20	65	16	60	19,5	66	14,5	60	30	248	J4C S20 ^{*)}	18 ^{**)}	3,16	3,18	3,14	3,19
20	20	20	25	79	19	72,5	24,5	79	16	71,5	36,5	255	J4C S20 ^{*)}	18 ^{**)}	3,31	3,34	3,25	3,35
25	25	25	32	91	22	88	31,5	90	18	87	43,5	262	J4C S20 ^{*)}	18 ^{**)}	3,52	3,58	3,44	3,59
40	38	32	50	116	31	137,5	49,5	114	24	134	61	281	J4C S20 ^{*)}	18 ^{**)}	4,05	4,14	3,90	4,19
50	45	38	63	137	38	142,5	62,5	134	28	142,5	72,5	291	J4C S20 ^{*)}	18 ^{**)}	4,55	4,71	4,26	4,69

*) 24-240 V AC/DC

**) +/- 10%

Other connections see L4-34
Actuation features and wiring diagram see L11-7-9

3/2-way ball valve type 23 with electric actuator, 230 V (400 V) / 50 Hz



Dimensions in mm													Actuator		Weight in kg / pc.				
DN	$d_{i,1}$	$d_{i,2}$	Cement socket				Welding socket				H_2	h_4	H_{total}	Type	t_s [sec]	Cement socket		Welding socket	
			d_m	z_1	l_e	z_2	d_m	z_1	l_e	z_2						PVC-U	PVC-C	PP	PVDF
80	68,5	58	90	187	51	196,5	89,2	186	36	196	94	191	353	OA6	12	13,7	14,4	12,7	13,9
100	90	78	110	249	61	243,5	109	243	42	242,5	126	214	376	OA8	12	17,6	18,6	16	18

Other connections see L4-34

Actuation features and wiring diagram see L11-3-5