

Ball valve type 21 with pneumatic actuator, 4 to 5 bar air pressure



Body material	PVC-U	PVC-C	PP	PVDF
Ball seat	PTFE			
Other seats	• EPDM	• FKM	• *)	• FKM-F
Working temperature	0 °C up to 50 °C ¹⁾	0 °C up to 90 °C ¹⁾	-20 °C up to 80 °C ¹⁾	-20 °C up to 100 °C ¹⁾
Nominal size	DN 15 up to DN 100			
Connection with pipe	<ul style="list-style-type: none"> • Cement socket or spigot • Flange connection acc. to DIN EN 1092-1 - PN 10 (16) 		<ul style="list-style-type: none"> • Welding socket or spigot • Threaded socket 	
Length	DIN EN 558 - 1 series FTF 1 (DIN 3202 - series F 1)			
Actuator	Pneumatic, single acting (air to open) / double acting			
Accessories	Limit switches, solenoid valves			

*) Special version: CSM, NBR, FKM-F, FEP / Parofluor on request

¹⁾ Working temperatures for sealing materials:

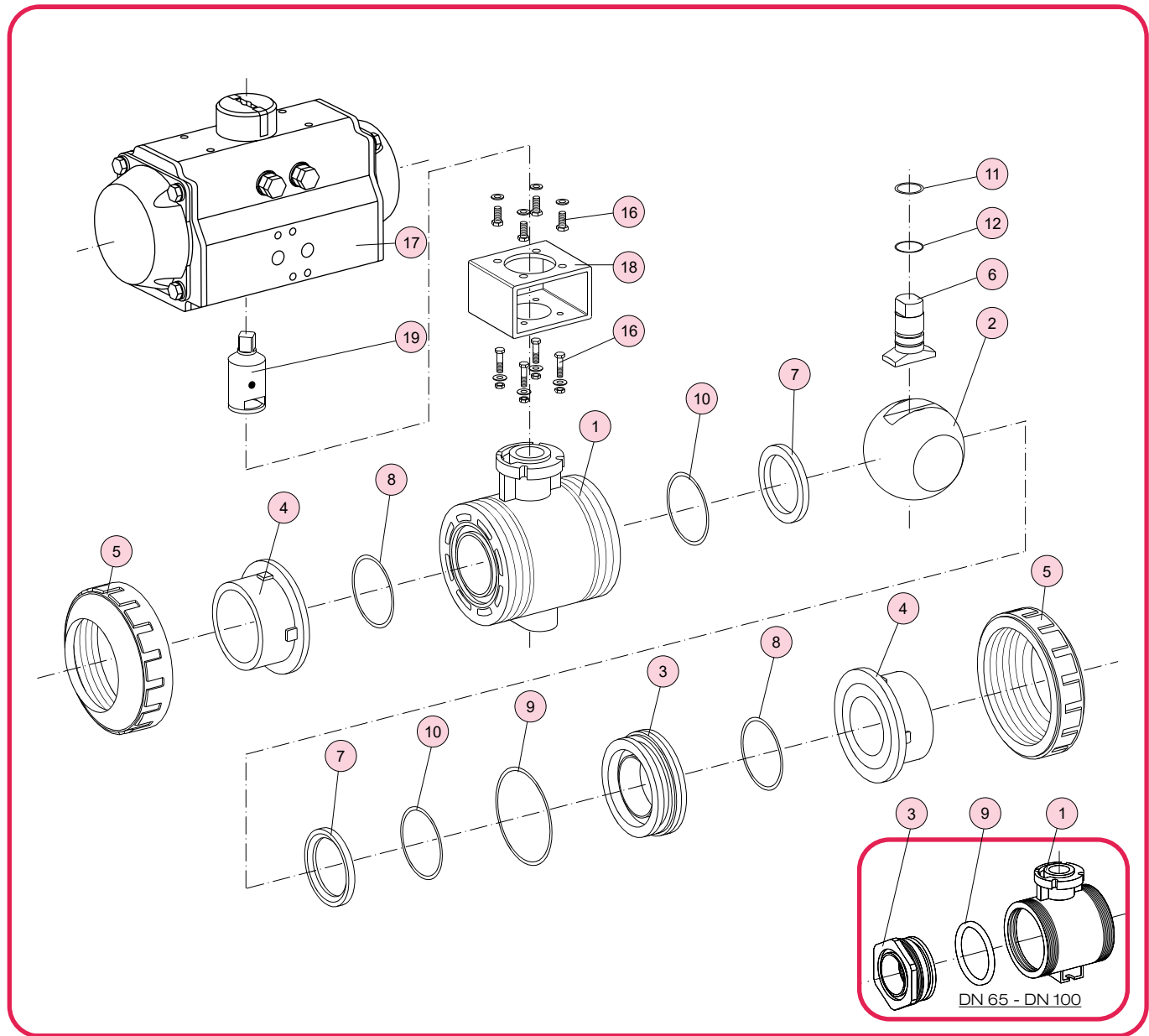
EPDM: -20 up to 90 °C
 NBR: -20 up to 100 °C
 FKM / FKM-F: -8 up to 100 °C

Example for an invitation to tender text:

Ball valve type 21, DN 25, PN 10, PP / EPDM, spigot end PP-R, SDR 11, integrated mounting, with pneumatic actuator type SC 15/4, single acting, air to open, 4 to 5 bar air pressure, optical position indicator

Document: FRANK_DB_L4_Kugelhahn Typ 21 pneum. 4-5bar_01-2024_EN

Ball valve type 21 with pneumatic actuator, 4 to 5 bar air pressure



No.	Description	Number	Material
1	Body	1	PVC-U, PVC-C, PP, PVDF
2	Ball ^{*)}	1	PVC-U, PVC-C, PP, PVDF
3	Carrier	1 ¹⁾	PVC-U, PVC-C, PP, PVDF
4	End connector (spigot, socket, flange)	2	PVC-U, PVC-C, PE, PP, PVDF
5	Union nut	2	PVC-U, PVC-C, PP-G, PVDF
6	Stem ^{*)}	1	PVC-U, PVC-C, PP, PVDF
7	Ball seat ^{*)}	2	PTFE
8	O-ring (A) ^{*)}	2	EPDM, FKM ²⁾

^{*)} Wearing parts

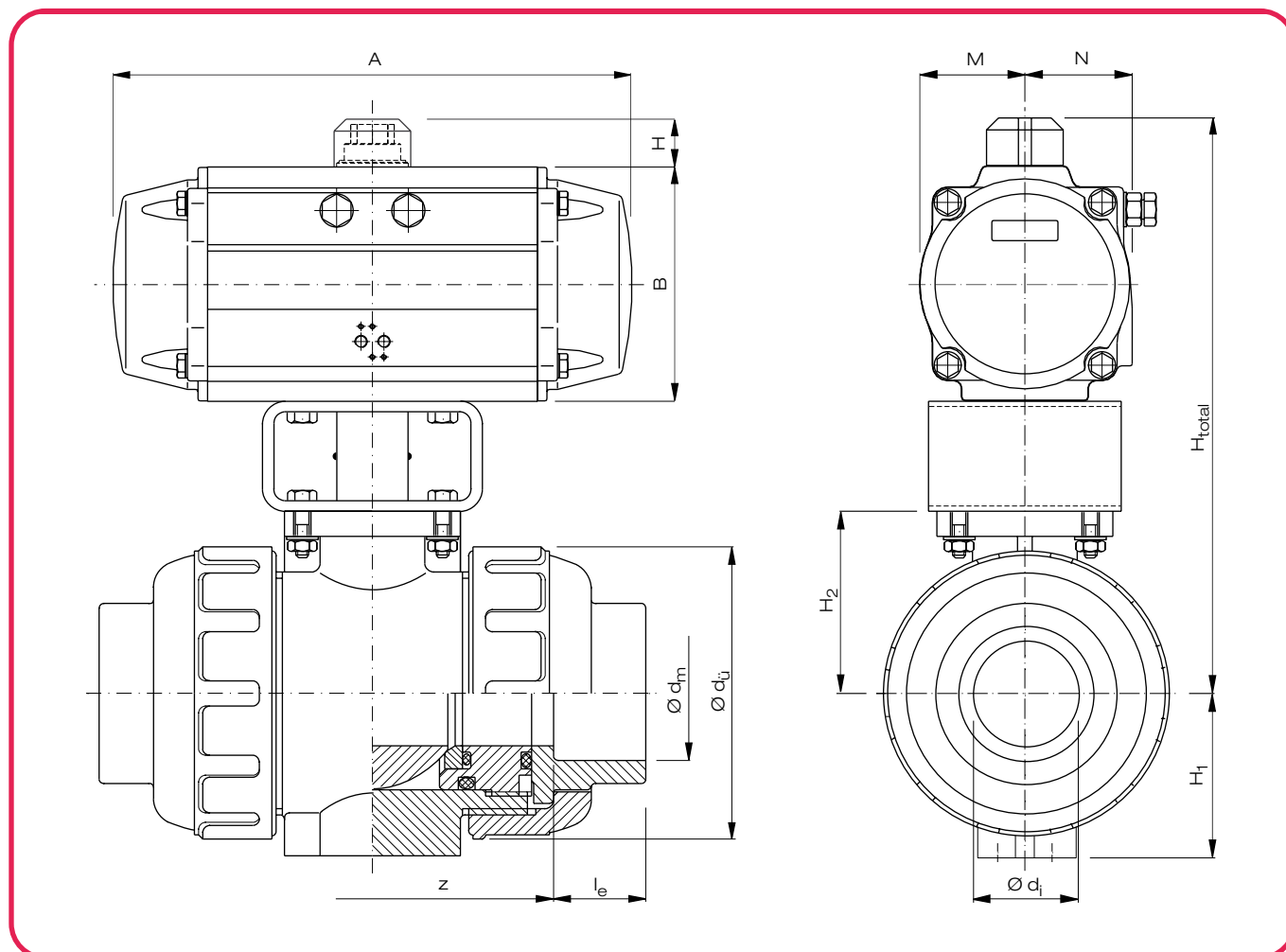
¹⁾ DN 65 up to DN 100: 2 pieces

No.	Description	Number	Material
9	O-ring (B) ^{*)}	1 ¹⁾	EPDM, FKM ²⁾
10	O-ring (C) / flat seat ^{*)} ³⁾	2	EPDM, FKM ²⁾
11	O-ring (D) ^{*)}	1	EPDM, FKM ²⁾
12	O-ring (E) ^{*)}	1	EPDM, FKM ²⁾
16	Screw, washer, nut	8/4	A2 - 1.4301 (SUS 304)
17	Actuator	1	aluminium alloy, normal anodized
18	Bracket / ISO	1	A2 - 1.4301 (SUS 304)
19	Coupling	1	A2 - 1.4301 (SUS 304)

²⁾ Special version: CSM, NBR, FKM-F, FEP / Parofluor on request

³⁾ Flat seat for DN 65 and above

Ball valve type 21 with pneumatic actuator, single acting, 4 to 5 bar air pressure

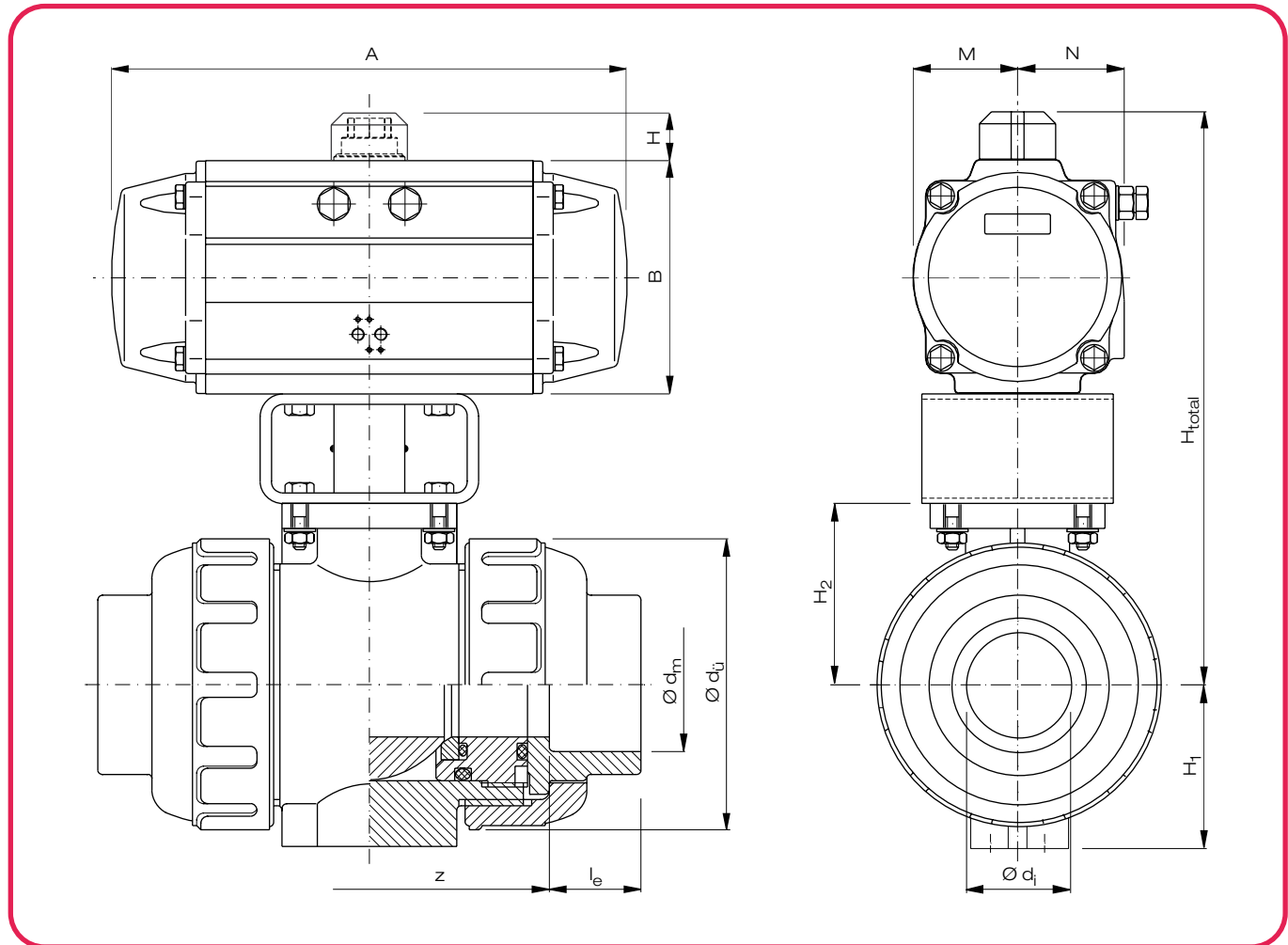


Dimensions in mm														Actuator			Weight in kg / pc.						
DN	d _i	d _ü	PVC socket			PP, PVDF socket			H ₂	H ₁	B	H	H _{total}	A	M	N	Type	Air ^{*)} [l/lift]	t _s [sec]	Socket			
			d _m	z	l _e	d _m	z	l _e												PVC-U	PVC-C	PP	PVDF
15	16	48	20	70	16	19,50	70	14,5	30	29	69	20	169	136	29	43	SC15/4	0,45	0,3	1,82	1,82	1,77	1,87
20	20	60	25	82	19	24,50	82	16	36,5	35	69	20	175	136	29	43	SC15/4	0,45	0,3	1,92	1,97	1,82	1,97
25	25	70	32	87	22	31,50	87	18,1	43,5	39	69	20	182	136	29	43	SC15/4	0,45	0,3	2,07	2,07	1,92	2,12
32	31	82	40	98	26	39,45	98	20,5	52,5	47	85	20	208	154	36	49	SC30/4	0,80	0,35	3,04	3,09	2,79	3,19
40	40	100	50	101	31	49,45	101	23,5	61	55	102	20	243	204	43	51	SC60/4	1,55	0,5	4,74	4,79	4,39	4,94
50	51	126	63	121	38	62,50	121	27,4	72,5	66	102	20	255	204	43	51	SC60/4	1,55	0,5	5,43	5,54	4,83	5,79
65	68	133	75	145	44	74,30	145	31	85	72	115	20	280	241	50	57	SC100/4	2,55	0,6	7,81	7,98	6,99	8,21
80	68,5	152	90	180	51	89,20	180	35,5	94	85	127	20	301	259	56	63	SC150/4	3,55	0,9	9,92	10,52	8,90	10,82
100	90	210	110	227	61	109,10	227	41,5	126	110	157	30	393	333	70	77	SC300/4	7,70	1,4	22,52	22,32	18,22	24,82

*) Air consumption with turning range 90° in litre/lift at 4 bar air pressure

other connections see L4-15
Data of actuators see L11-1, 2

Ball valve type 21 with pneumatic actuator, double acting, 4 to 5 bar air pressure



Dimensions in mm													Actuator			Weight in kg / pc.							
DN	d _i	d _ü	PVC socket			PP, PVDF socket			H ₂	H ₁	B	H	H _{total}	A	M	N	Type	Air ^{*)} [l/lift] [sec]	Socket				
			d _m	z	l _e	d _m	z	l _e											PVC-U	PVC-C	PP	PVDF	
15	16	48	20	70	16	19,50	70	14,5	30	29	69	20	169	136	29	43	DR15	1,20	0,25	1,75	1,76	1,68	1,79
20	20	60	25	82	19	24,50	82	16	36,5	35	69	20	176	136	29	43	DR15	1,20	0,25	1,85	1,88	1,75	1,90
25	25	70	32	87	22	31,50	87	18,1	43,5	39	69	20	183	136	29	43	DR15	1,20	0,25	1,98	2,01	1,83	2,07
32	31	82	40	98	26	39,45	98	20,5	52,5	47	69	20	192	136	29	43	DR15	1,20	0,25	2,41	2,46	2,16	2,56
40	40	100	50	101	31	49,45	101	23,5	61	55	69	20	200	136	29	43	DR15	1,20	0,25	2,81	2,86	2,41	3,01
50	51	126	63	121	38	62,50	121	27,4	72,5	66	69	20	212	136	29	43	DR15	1,20	0,25	3,46	3,61	2,86	3,86
65	68	133	75	145	44	74,30	145	31	85	72	85	20	251	154	36	49	DR30	2,10	0,3	7,04	7,21	6,22	7,44
80	68,5	152	90	180	51	89,20	180	35,5	94	85	102	20	276	204	43	51	DR60	4,00	0,35	9,90	10,50	8,88	10,80
100	90	210	110	227	61	109,10	227	41,5	126	110	127	20	353	259	56	63	DR150	9,10	0,6	19,08	19,88	14,78	21,38

*) Air consumption with turning range 90° in litre/lift at 4 bar air pressure

other connections see L4-15
Data of actuators see L11-1, 2