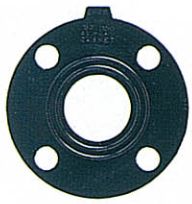


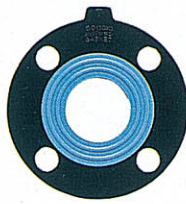
AV GASKETS



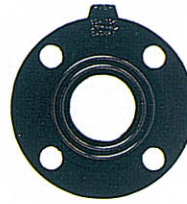
Full face Type Rubber Gasket



Ring Type Gasket (JIS only)



PTFE coated



PVDF coated

● MATERIAL : EPDM, PTFE, PVDF, CSM, FPM, IIR, others

FEATURES

- AV GASKETS offer Similar sealing performance with 1/3 bolt tightening torque, compared to flat or envelope style gaskets.
- Uniform dimension, fine surface, suitable hardness.
- Long service life.
- Unique Convex Design.

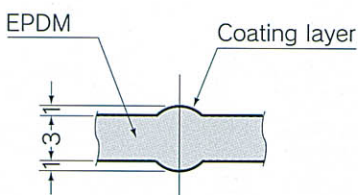
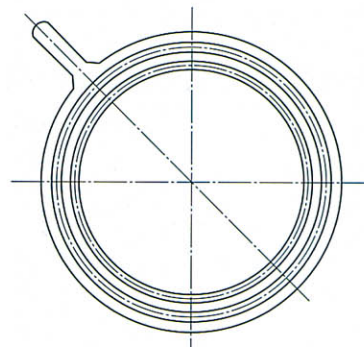
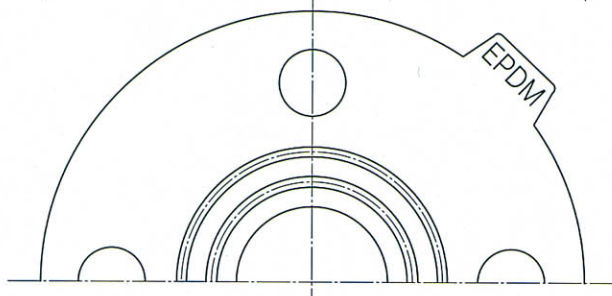
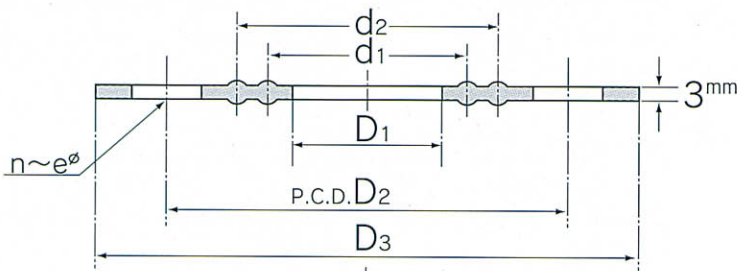
WORKING TEMPERATURE AND SIZE AVAILABILITY

MATERIAL	WORKING TEMPERATURE °C(° F)	SIZE AVAILABILITY BY STANDARD		
		JIS	ANSI	DIN
EPDM	-40°C ~ 90°C (-40°F ~ 195°F)	15mm - 350mm	1/2" - 16"	15mm - 350mm
PTFE	-40°C ~ 120°C (-40°F ~ 250°F)	15mm - 300mm	1/2" - 12"	15mm - 300mm
PVDF	-40°C ~ 120°C (-40°F ~ 250°F)	15mm - 300mm	1/2" - 10" *	15mm - 300mm

Working temperature is different depending on type of fluid.

* Except for 1 1/4" and 2 1/2"

DRAWING-DIMENSIONS



TYPE	Nom, Size	Thickness
PTFE	15mm(1/2") to 300mm(12")	0.4mm(0.016")
PVDF	15mm(1/2") to 65mm(2 1/2")	0.4mm(0.016")
	80mm(3") to 300mm(12")	0.5mm(0.02")

▼DIMENSIONS TABLE

○Full-face type (JIS 10K)

Unit:mm

Nominal Size mm(inch)	D ₁	D ₂	D ₃	n	e	d ₁	d ₂
13 (3/8)	15	65	88	4	15	22	37
15 (1/2)	18	70	93	4	15	26	41
20 (3/4)	22	75	98	4	15	32	47
25 (1)	30	90	123	4	19	38	53
30 (1 1/4)	37	100	133	4	19	50	65
40 (1 1/2)	43	105	138	4	19	54	69
50 (2)	54	120	153	4	19	68	83
65 (2 1/2)	69	140	173	4	19	86	101
80 (3)	80	150	183	8	19	98	112
100 (4)	102	175	208	8	19	120	138
125 (5)	127	210	248	8	23	145	166
150 (6)	150	240	278	8	23	168	190
200 (8)	198	290	328	12	23	216	247
250 (10)	249	355	398	12	25	270	306
300 (12)	300	400	443	16	25	324	352
350 (14)	350	445	488	16	25	370	390

○Ring type (JIS 10K)

Unit:mm

Nominal Size mm(inch)	D ₁	D ₂	d ₁	d ₂
15 (1/2)	18	54	26	41
20 (3/4)	22	59	32	47
25 (1)	30	70	38	53
30 (1 1/4)	37	80	50	65
40 (1 1/2)	43	85	54	69
50 (2)	54	100	68	83
65 (2 1/2)	69	120	86	101
80 (3)	80	130	98	112
100 (4)	102	155	120	138
125 (5)	127	187	145	166
150 (6)	150	217	168	190
200 (8)	198	267	216	247
250 (10)	249	329	270	306
300 (12)	300	374	324	352

○Full-face type (DIN 2501)

Unit:mm

Nominal Size mm(inch)	D ₁	D ₂	D ₃	n	e	d ₁	d ₂
15 (1/2)	18	65	93	4	14	26	41
20 (3/4)	22	75	103	4	14	32	47
25 (1)	30	85	113	4	14	38	53
40 (1 1/2)	43	110	148	4	18	54	69
50 (2)	54	125	163	4	18	68	83
65 (2 1/2)	69	145	183	4	18	86	101
80 (3)	80	160	198	8	18	98	112
100 (4)	102	180	218	8	18	120	138
125 (5)	127	210	248	8	18	145	166
150 (6)	150	240	283	8	23	168	190
200 (8)	198	295	338	8	23	216	247
250 (10)	249	350	393	12	23	270	306
300 (12)	300	400	443	12	23	324	352
350 (14)	350	460	503	16	25	370	390

○Full-face type (ANSI/ASME B 16.5 CLASS150)

Unit:inch

Nominal Size inch(mm)	D ₁	D ₂	D ₃	n	e	d ₁	d ₂
1/2 (15)	0.7	2.4	3.4	4	0.6	1.0	1.6
3/4 (20)	0.9	2.8	3.8	4	0.6	1.3	1.9
1 (25)	1.2	3.1	4.2	4	0.6	1.5	2.1
1 1/4 (30)	1.5	3.5	4.5	4	0.6	2.0	2.6
1 1/2 (40)	1.7	3.9	4.9	4	0.6	2.1	2.7
2 (50)	2.1	4.7	5.9	4	0.8	2.7	3.3
2 1/2 (65)	2.7	5.5	6.9	4	0.8	3.4	4.0
3 (80)	3.2	6.0	7.4	4	0.8	3.9	4.4
4 (100)	4.0	7.5	8.9	8	0.8	4.7	5.4
5 (125)	5.0	8.5	9.9	8	0.9	5.7	6.5
6 (150)	5.9	9.5	10.9	8	0.9	6.6	7.5
8 (200)	7.8	11.8	13.4	8	0.9	8.5	9.7
10 (250)	9.8	14.3	15.9	12	1.0	10.6	12.1
12 (300)	11.8	17.0	18.9	12	1.0	12.8	13.9
14 (350)	13.9	18.7	20.9	12	1.14	14.6	15.4
16 (400)	15.6	21.2	23.4	16	1.14	17.3	18.5

RECOMMENDED TIGHTENING TORQUE

(ALL MATERIALS/FULL FACE TYPE)

mm(inch)	kgf-cm	FT-LB	mm(inch)	kgf-cm	FT-LB	mm(inch)	kgf-cm	FT-LB
15 (1/2)	175	13	65 (2 1/2)	225	16	200 (8)	550	40
20 (3/4)	175	13	80 (3)	300	22	250 (10)	550	40
25 (1)	200	14	100 (4)	300	22	300 (12)	600	43
40 (1 1/2)	200	14	125 (5)	400	29	350 (14)	600	43
50 (2)	225	16	150 (6)	450	32	400 (16)	800	58