

# Project report Glasgow College

## Installation of FRANK Puddle flanges at Glasgow College.

### Overview:

The new £228m City of Glasgow College will consolidate the existing estate of 11 buildings on 8 sites to two campuses sited on Cathedral Street and Thistle Street in the centre of Glasgow when it is completed in 2016.



Architects Reich & Hall and Michael Laird combined their formidable creative skills and design ingenuity to realise this 57,000sq/m centre of excellence occupying 11 storeys for the conjoined schools of nautical studies, engineering and energy together with halls of residence for over 40,000 students and staff on the banks of the river Clyde.

Interflow supplied over 400 EPDM puddle flanges for 125mm and 150mm NB plastic and 375mm NB concrete drain pipes to groundworks contractor Dunne Group.

Site Engineer Frank Markey said he was delighted to find the whole quantity of puddle flanges available ex stock, which meant the ground crew could crack on with no delays and, being even easier to fit with the help of the Easy-Lock clamp, they made really good progress.

### Volume

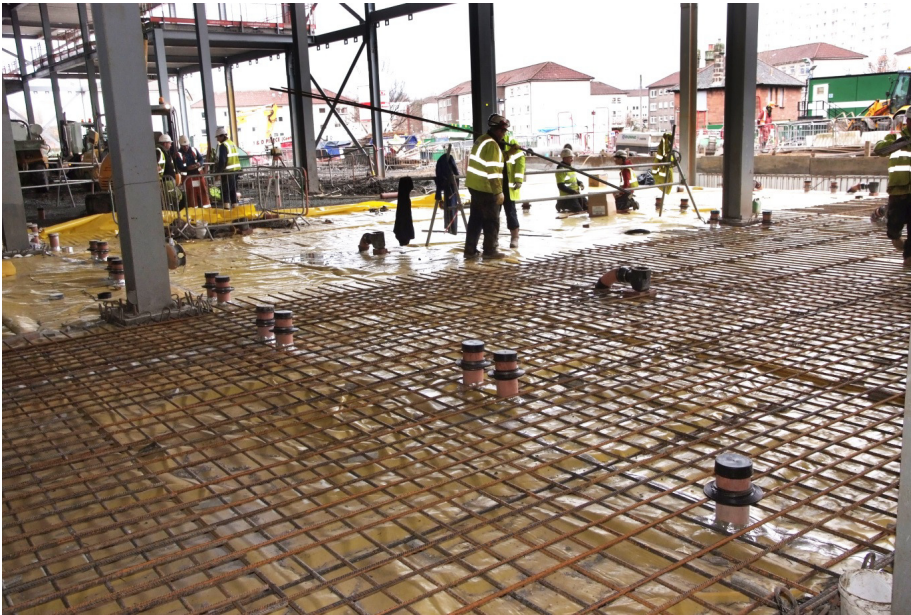
425 pcs. FRANK Puddle flanges d 125 and d 180 mm  
17 pcs. FRANK Puddle flanges d 400 mm plus accessories

### Partner

INTERFLOW UK LTD., Leighton, Shrewsbury

Your contact person for further information:

[i.schneider@frank-gmbh.de](mailto:i.schneider@frank-gmbh.de)



Drain pipes with FRANK puddle flanges prior to concrete pour

